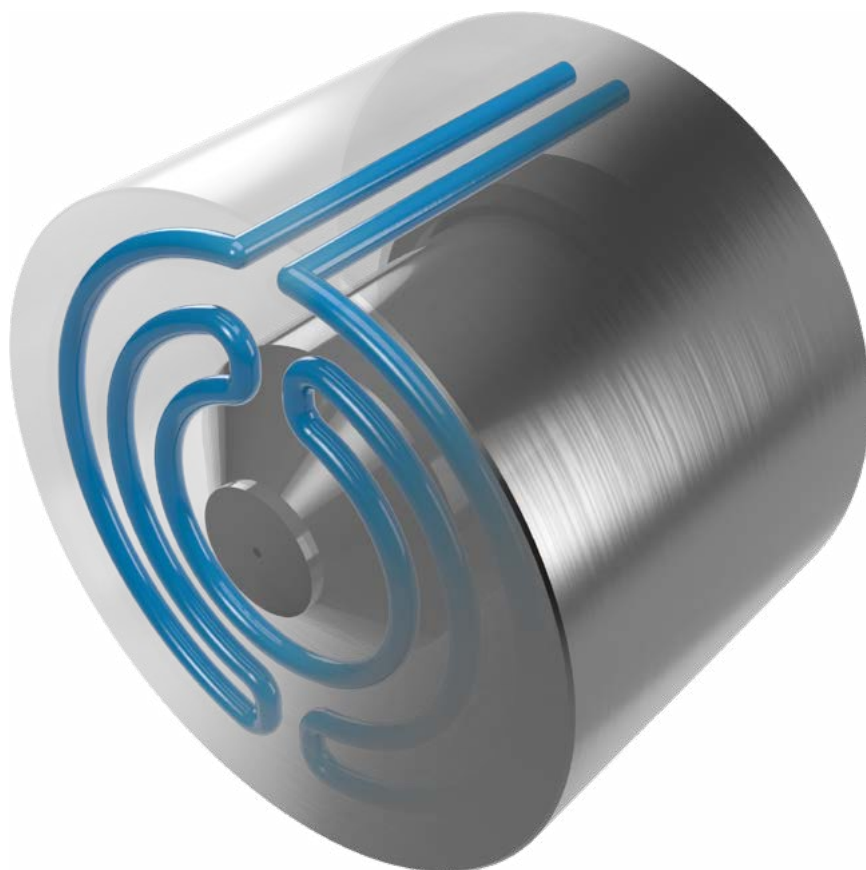




Flat Gate Insert with bushing

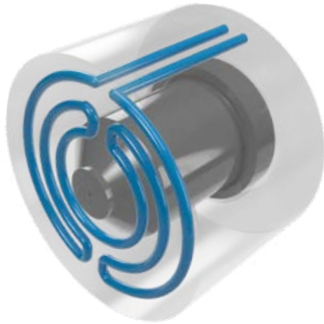


DATA SHEET

Flat Gate Insert with bushing

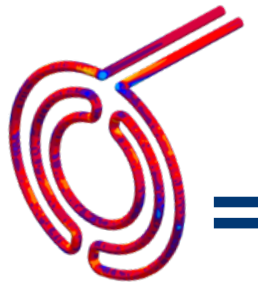
01 Cooling Power

DESIGN APPROACH



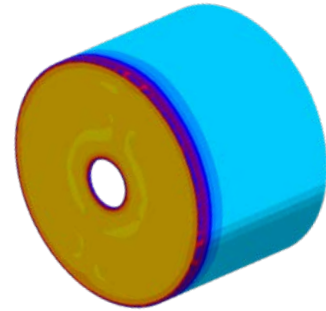
- Optimal cooling of overheated surfaces in the nozzle area.
- Homogeneous cooling of the working surface.
- Circular shape of cooling channels for maximum efficiency.

THERMAL ANALYSIS AND SIMULATION



- Low standard deviation of the temperature field.
- Small pressure differences between the inlet and outlet of the cooling medium.
- High Reynolds number, high turbulence, optimal heat transfer.

iTherm® FLAT GATE INSERT WITH BUSHING



COOLING POWER OPTIONS

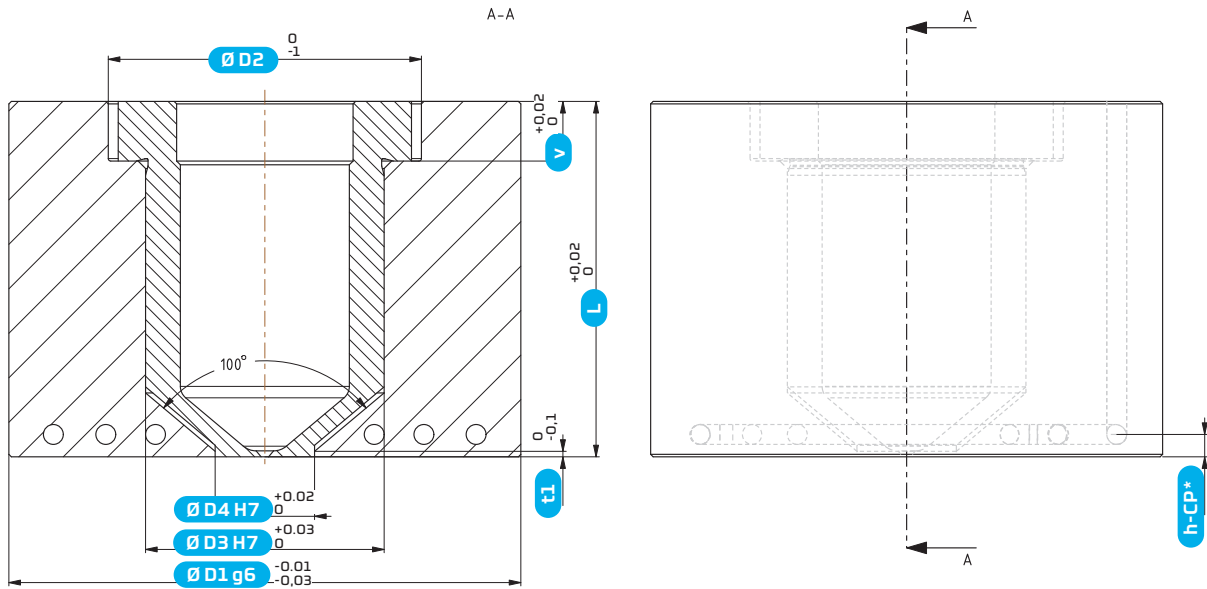
10 W/m²

15 W/m²

25 W/m²

02

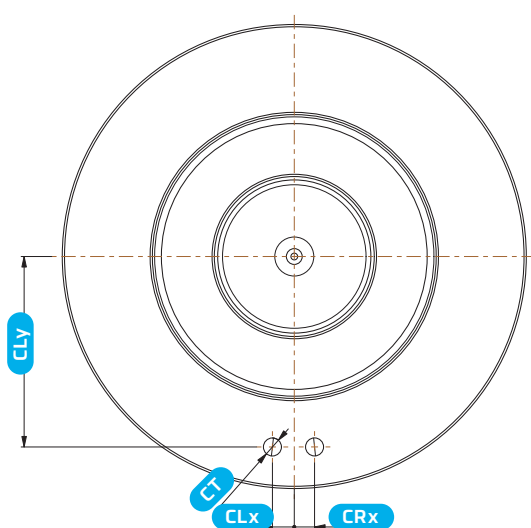
Dimensional parameters



*The dimension changes based on the cooling power input

Name	D1	D2	D3	D4	v	t1	L range
20BF	55	35	28	16	5	2,3	50-100
22BF	58	38	32	16	5	2,3	50-120
26BF	65	45	36	16	5	2,3	50-120
32BF	70	50	42	20	9	3,3	60-120
38BF	79	59	48	26	12	4,3	60-120
44BF	84	64	54	32	12	5,3	60-120
50BF	92	72	60	38	12	6,3	60-120

03 Connection holes



Name	CLx	CRx	CLy	CT
20BF	0-24	0-24	0-24	1/16" NPT - 1/2"NPT or G1/16" - G1/2"
22BF	0-26	0-26	0-26	1/16" NPT - 1/2"NPT or G1/16" - G1/2"
26BF	0-29	0-29	0-29	1/16" NPT - 1/2"NPT or G1/16" - G1/2"
32BF	0-32	0-32	0-32	1/16" NPT - 1/2"NPT or G1/16" - G1/2"
38BF	0-36	0-36	0-36	1/16" NPT - 1/2"NPT or G1/16" - G1/2"
44BF	0-39	0-39	0-39	1/16" NPT - 1/2"NPT or G1/16" - G1/2"
50BF	0-43	0-43	0-43	1/16" NPT - 1/2"NPT or G1/16" - G1/2"